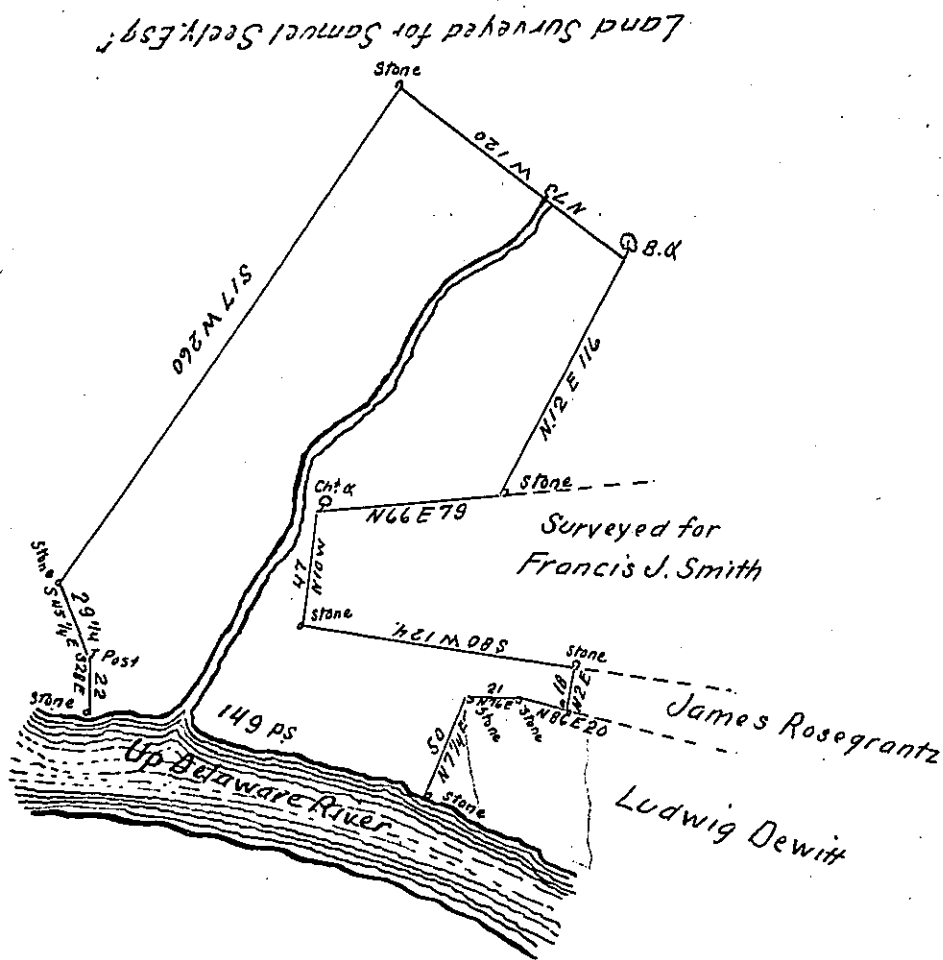


The bearing & distance
up Delaware River are

| | | |
|----|---------|-------|
| 1. | N. 87 E | 92 |
| 2. | N. 68 E | 20 |
| 3. | N. 83 E | 20 |
| 4. | S. 70 E | 17 |
| | | <hr/> |
| | | 149. |

Daniel Hervy's
Improvements



Now Wayne County

By virtue of a Warrant dated the 29th November 1793 Surveyed the 10th January
1794 to John Colebagh the above described tract of land Situate on a small stream
called middle brook in Upper Smithfield Township Northampton County contain-
ing two hundred and six Acres on half and the allowance of Six p. Cent &c^a

To Samuel Cochran Esquire }
Surveyor General - - -

p. Geo. Palmer D. S.

IN TESTIMONY that the above is a copy of the original remaining on file in
the Department of Internal Affairs of Pennsylvania, made
conformably to an Act of Assembly approved the 16th day of
February, 1833, I have hereunto set my Hand and caused
the Seal of said Department to be affixed at Harrisburg,
this twenty second day of April 1904.

Geo. D. Palmer
Secretary of Internal Affairs.